



Dead End

Original title: Dood Spoor

Ed is born with a peculiar gift: he can 'see' the origin or history of things by tasting or eating them. He puts his weird talent to creative use in his one-man business The Aftertaste, a service helping people cope with the unexpected loss of a loved one, by looking into the deceased's final hours. When his next client turns out to be a homicide detective stuck on a mysterious case, Ed faces a moral dilemma: if his gift works on a toothbrush or a sausage, would it work on a body too? The more Ed bites down into the case, the more he and his marriage are devoured by his own existential crisis.

CREDITS

DIRECTOR: Hans Vercauter, Malin-Sarah Gozin

PRODUCER: Dimitri Verbeeck

WRITER: Malin-Sarah Gozin

CREATION DETAILS

TYPE: Series

PRODUCTION SHARE: Majority Flemish Production

GENRE: Drama, Crime, Mystery, Black comedy

YEAR OF PRODUCTION: 2025

PRODUCTION STATUS: Completed

ORIGINAL TITLE: Dood Spoor

ORIGINAL LANGUAGE: Dutch

TECHNICAL SPECS

RUNNING TIME: 6 x 50'

ASPECT RATIO: 2:1 (18:9)

SOUND FORMAT: 5.1 (+sub)

RELEASE FORMAT: 4K

COLOUR: Colour

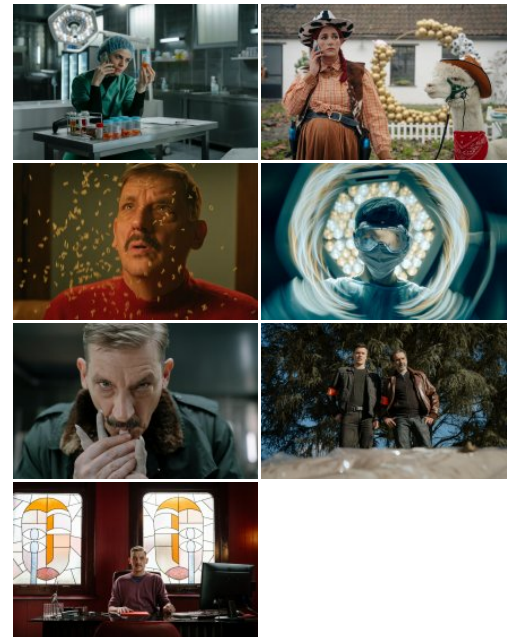
CONTACT & SALES

CONTACT

Lompvis BV
T +32 15 67 76 75
info@lompvis.tv

SALES

CAVIAR
T +32 15 67 76 75
dimitri.verbeeck@caviar.tv



MORE INFO

flandersimage.com